

PRESSFLOW

*EQUIPMENT PVT.LTD*



# ABOUT PRESSFLOW:-

- **PRESSFLOW EQUIPMENT PVT. LTD.** emerged from Fine Engineering, founded by Mr. Abul Faiz. Initially focused on precision engineering, the company evolved to specialize in fluid control technology, delivering innovative, high-quality solutions for fluid management.
- The state-of-the-art 8,000 sqft facility blends skilled craftsmanship with advanced machinery, ensuring rigorous quality standards and meeting high production demands. The company values customer feedback to continuously enhance its offerings.
- Now led by Mr. Abul Faiz's son, PRESSFLOW EQUIPMENT is set to expand its operations and uphold its commitment to excellence. It serves key sectors such as aerospace, chemicals, oil and gas, water treatment, hydraulics, marine, petrochemical, and power generation, providing tailored solutions for reliability and performance. PRESSFLOW EQUIPMENT stands out as the preferred choice for fluid control solutions, setting industry standards for quality and innovation

## WHY US :-

- *Tailored Solutions: We offer customized products that meet the specific needs of each client.*
- *Uncompromised Quality: Our strict quality control ensures reliability and durability in every solution.*
- *Dedicated Support: Our responsive team is always available to assist clients promptly.*

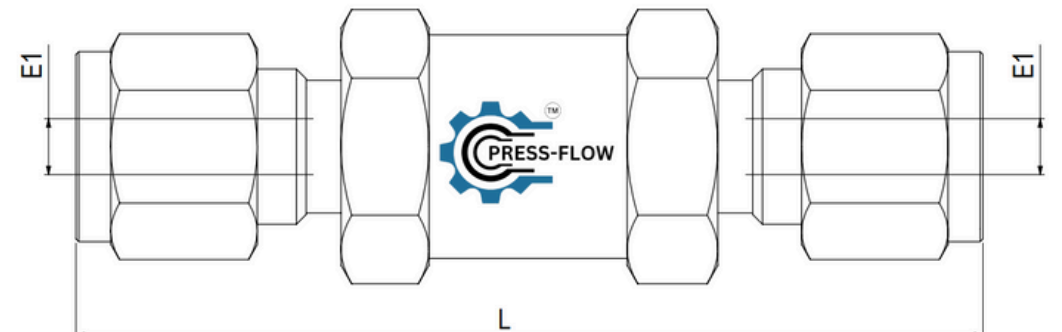
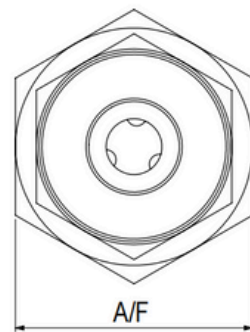


## PRODUCT DESCRIPTION: -

Our advanced check valve automatically prevents backflow, protecting your equipment and systems from potential damage. With minimal resistance to flow, it ensures smooth and efficient operation. Perfectly suited for critical industries such as oil and gas, chemical processing, and water treatment, our check valve delivers reliable performance, safeguarding your operations and improving system efficiency.

## TECHNICAL SPECIFICATION: -

- MOC:- STAINLESS STEEL 316 , 304 , HASTELLOY 276 , INCONEL 625 , MONEL 400
- SIZES:- 1/4" , 1/2" ARE AVAILABLE.
- SEAL:- VITON
- END CONNECTIONS:- NPT, BSPP , OD (MALE& FEMALE)
- PRESSURE RATING: UPTO 6000 PSI AT 25°C
- CRACKING PRESSURE- 0.2 to 0.5 bar.



Size	Part No	Dimensions are in mm		End Connection Size				Orifice
		A/F	L	E1	Code	E2	Code	
1/4"	PF_NRV_14	17	50	BSPP	BP	BSPP	BP	4
1/2"	PF_NRV_12	29	90	NPT	N	NPT	N	4
				OD	OD	OD	OD	4

MOC	Code	End Type	Code
SS316	S6	Male	M
SS304	S4	Female	F
HC276	HC6		
Monel400	MN4		
Inconel 625	IN6		

Item Code	Item Discription
PF_NRV_14_BPM_BPF_S6	Non Return Valve 1/4" BSPP(M) X BSPP(F)_SS316

- 1) Dimension are for Reference only Are Subject to change.
- 2) Customize End Connection & Sizes are Available as per Requirement.



 *Valson Textile Mills, LBS Road, Bhandup (W) Near Amar equipments Pvt Ltd, Mumbai - 400078, INDIA*

 [Sales@pressflowequipment.com](mailto:Sales@pressflowequipment.com)



+91-96191 08006 /  
+91-9082139118



[www.pressflowequipment.com](http://www.pressflowequipment.com)